

USACE – ST PAUL DISTRICT CHANNELS & HARBORS PROJECT

Presentation for

MISSISSIPPI MANAGERS MEETING

By Bob Stanick

7 February 2023



US Army Corps
of Engineers®



BUILDING STRONG®



**MISSISSIPPI VALLEY DIVISION
BUILDING STRONG®**



OUTLINE

- Staff
- 2022 Channel Activates
- 2023 Project
- Impacts to Navigation



BUILDING STRONG®



CHANNELS & HARBORS STAFF



- | | |
|------------------|--|
| Robert Stanick | Chief, Channels & Harbors |
| Dan Cottrell | Dredging Manager <ul style="list-style-type: none">* Channel & Harbor Management* Dredge Cut Layout |
| Paul Machajewski | Dredged Material Manager <ul style="list-style-type: none">* Long-term Placement Site Planning* Placement Site Excavations |
| Dan DeVaney | Channel Maintenance Coordinator <ul style="list-style-type: none">* Placement Site Implementation/Management* Beneficial Use Coordination |
| Al VanGuilder | Chief, Hydro-Survey Unit <ul style="list-style-type: none">* Hydrographic Surveys* Topographic Surveys |



BUILDING STRONG®

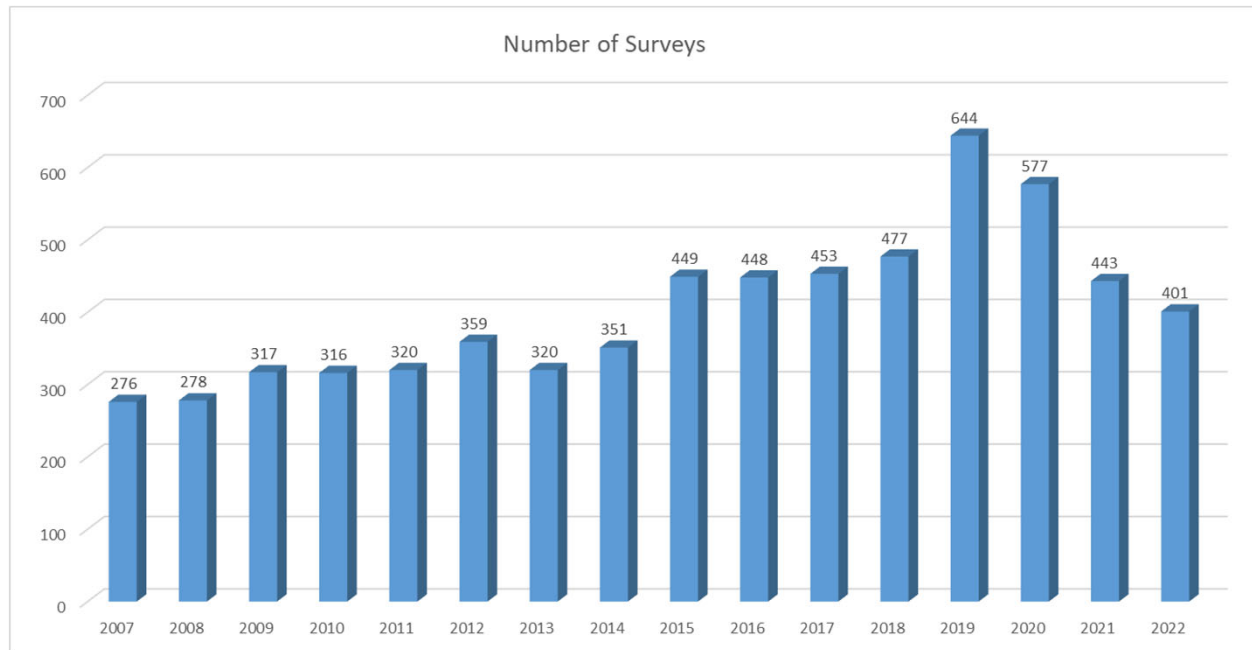


2022 CHANNEL ACTIVITIES



Hydrographic Survey Unit

- Many challenges this season (Personnel, Training, Equip.)
- 401 total surveys completed
- Over 30,019 acres surveyed



BUILDING STRONG®



2022 CHANNEL ACTIVITIES



Early May start to the dredging season for only one of the mechanical plants.

2021 there were 4 dredges operating by the 4th of May.

The Goetz was delayed due to parts being on backorder for a major maintenance item, they started the 2nd of June at the Chippewa Delta.

- Maximum of 4 dredges operated in St. Paul District this year, luckily conditions tolerated that number of dredges and it appears early season dredged locations held well due to low flows late in the season.
- The Dredge Goetz left the District on 2nd of August.

We will see what spring high water brings.



BUILDING STRONG®

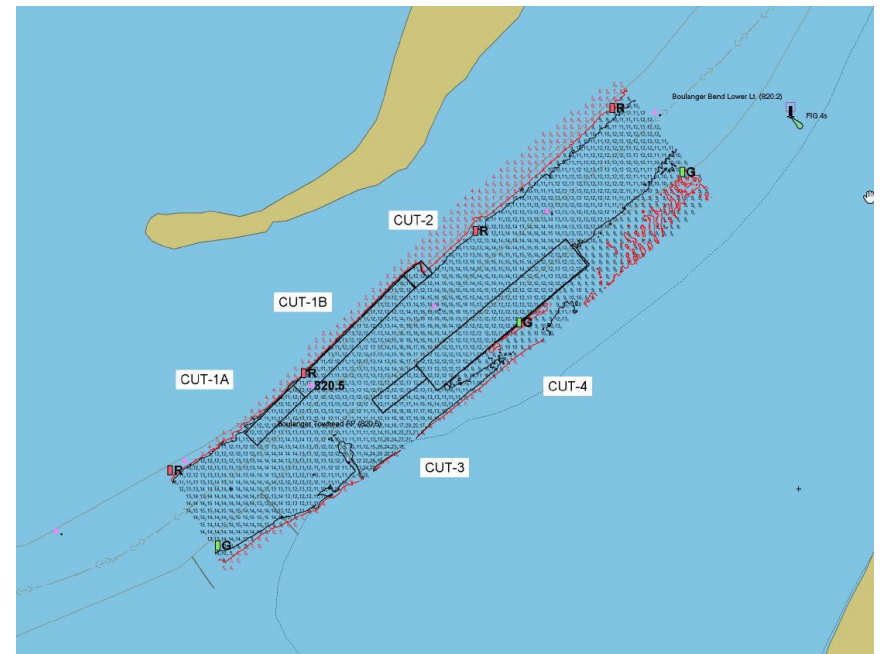
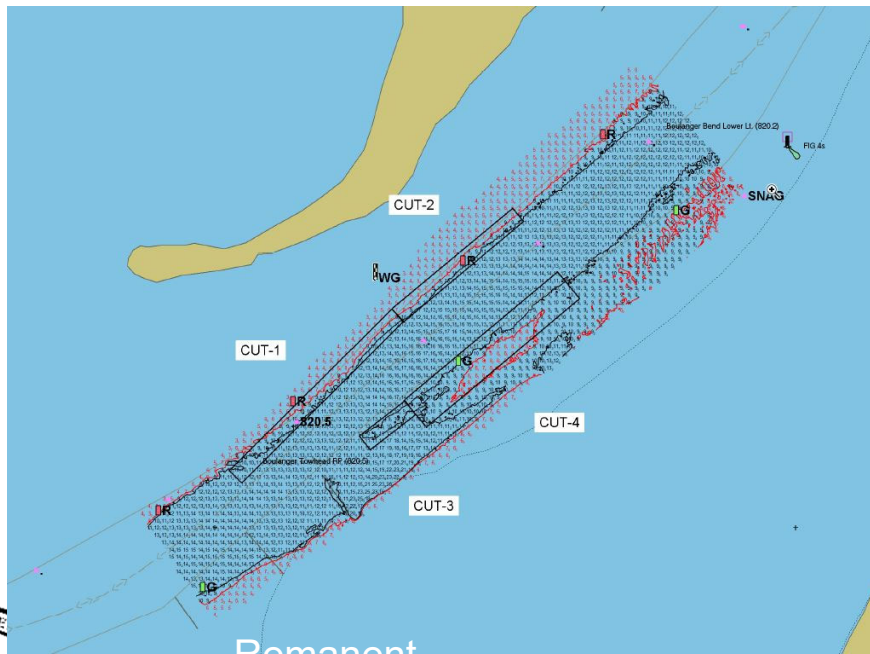


2022 CHANNEL ACTIVITIES



Boulanger Bend channel adjustment – Completed September 8, 2022

Same river miles but right descending side rather than left descending side. After Boulanger Towhead light was removed in 2020 the channel adjustment need was obvious.



BUILDING STRONG®



2022 CHANNEL ACTIVITIES



Dredging Season 2022:
May 4th – November 16th

Contract Mechanical
Plant 2



Total Dredged = 818,108

Jobs = 33

33% Government 67% Contract by Job
46% Government 54% Contract by Volume



BUILDING STRONG®

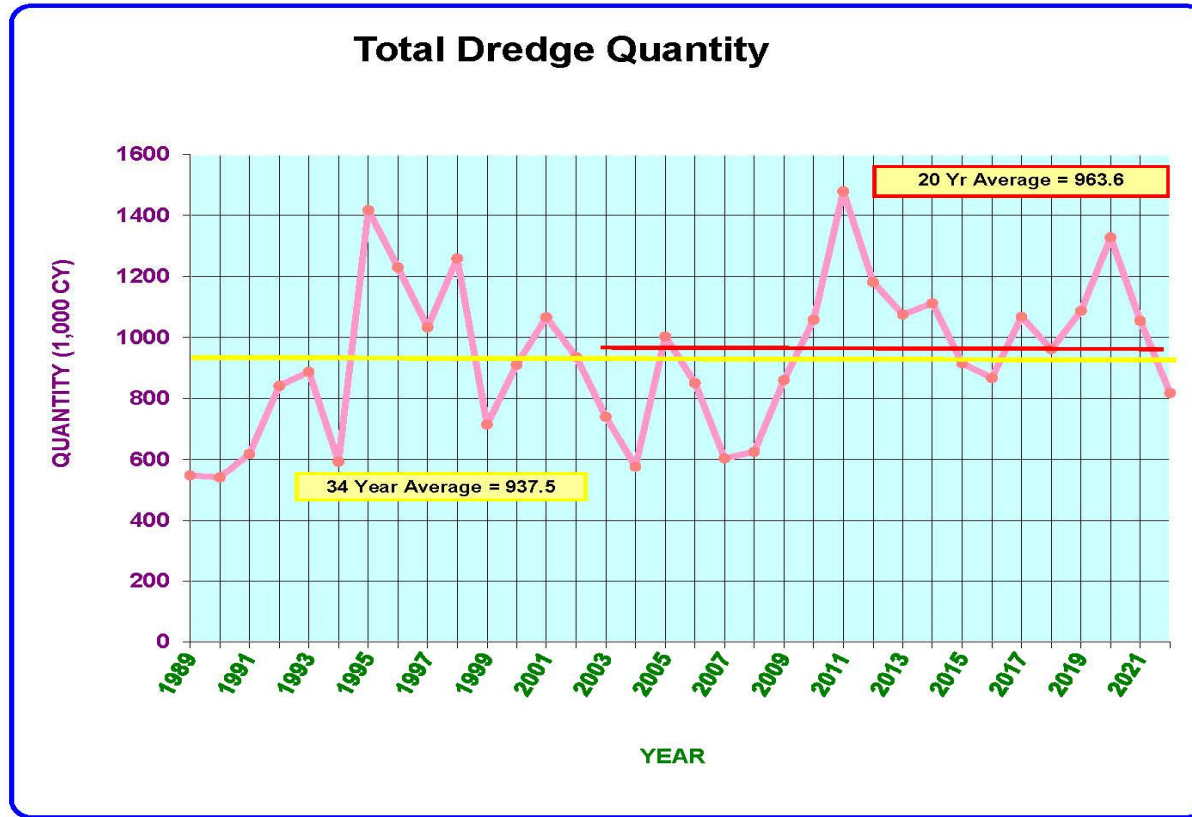


2022 CHANNEL ACTIVITIES



YEAR	QUANTITY (1,000 CY)
1989	548.6
1990	542.0
1991	618.1
1992	841.5
1993	888.0
1994	593.2
1995	1,417.4
1996	1,230.0
1997	1,033.9
1998	1,258.9
1999	715.3
2000	911.9
2001	1,066.5
2002	936.3
2003	740.2
2004	577.0
2005	1,003.2
2006	851.1
2007	604.1
2008	625.7
2009	860.9
2010	1,058.8
2011	1,479.0
2012	1,182.1
2013	1,075.2
2014	1,112.3
2015	915.5
2016	867.8
2017	1068.1
2018	962.2
2019	1,087.7
2020	1,328.2
2021	1,055.2
2022	818.1

Average 937.5
20 yr Avg 963.6



BUILDING STRONG®



2023 PROJECTS

- **Land Acquisition for Dredged Material Placement**
 - Pool 4: Continue negotiating use and/or acquisition of ~330 acres
 - Pool 5: Continue development of Rolling Prairie site (10 acres)
 - Pool 6: Negotiating use of ~125 acres
- **Planned Placement Site Unloading**
 - Pool 2: Pigs Eye Lake Section 204 Habitat Project ~400K CY of material from Pine Bend, Upper Boulanger, and Lower Boulanger (2022-2025)
 - Pool 5 (AWN to RP) ~100K CY via Mech. Unloading Contract
 - Pool 8 (A/B Browns to Browns) ~100K CY via Mech. Unloading Contract
- **Dredged Material Management Plans**
 - Pool 2: Working Implementation
 - Pool 4: Sec 217(d) Approval & Implementation
 - Pool 6: Final Approval & Begin Implementation
 - Pool 9: Developing Alternatives (Genoa Power)
 - Pool 10: Developing Alternatives (Sediment Bypass System)



BUILDING STRONG®



2023 CHANNEL PROJECTS



- **Dredging Related**
 - Pursue environmental review work for Wacouta Light in Upper Pool 4 and Richmond Island in Pool 7.
 - Pool 10: McGregor Lake HREP contract, option 2 has been awarded, C&H will support the dredging process with surveys, dredge cut layout for Mississippi Gardens borrow source and East Channel if needed.
- **AIS AtoNs**
 - Continue use where appropriate
- **Channel Management Study**
 - Continue Upper Pool 4 CMS: Modeling underway, expect alternatives by the end of FY 23. Plan completion by the end of FY 24.



BUILDING STRONG®



RESILIENT NAVIGATION: PARTNERSHIPS



River Resources Forum

An interagency partnership on the Upper Mississippi River

The River Resources Forum, or RRF, is a state and federal agency partnership for addressing resource issues concerning the Upper Mississippi River system within the St. Paul District jurisdiction. Participating agencies include: the U.S. Army Corps of Engineers, the U.S. Fish and Wildlife Service, the U.S. Coast Guard, the Environmental Protection Agency, the Natural Resources Conservation Service, the National Park Service, the Minnesota Pollution Control Agency and the departments of natural resources and transportation from Minnesota, Wisconsin and Iowa.



BUILDING STRONG®



RIAC

The End

